



Engineered to last

WEAR RESISTANT FLOW CONTROL

For outloading operations, a reliable flow control gate is needed that is long lasting when used with abrasive products.

Using technology from our range of wear resistant rotary valves, the Sector Valve has a hard wearing body and control gate and a replaceable seat.

The control can be manual, pneumatic, electric and can be fitted with 4-20mA control for remote operation.

An ATEX version is available for zone 22 areas.

Common applications are cement plant, quarries and mills and are a long lasting alternative to butterfly and slide gate valves.



SEAL OPTIONS

Standard is a close machined metal to metal seat, with a long lasting face that can be replaced when the valve is refurbished.

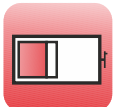
We can also fit soft seats such as felt or polyurethane (shown below).



Butterfly



Rotary



Slide



Knifegate



Diverter



Dyris



Ceramic



Specials



Sifter



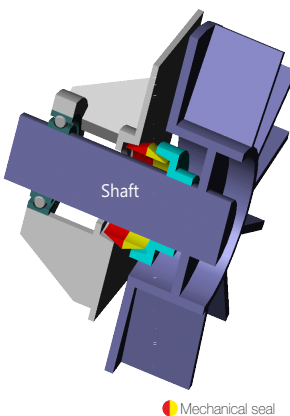
Seals

MECHANICAL SHAFT SEALS

With traditional seals the product pushes past packings and wears the shaft - even the body behind hard facings can wear out. Used for over 25 years, MID's unique mechanical shaft seals are leak tight and maintenance free, dramatically reducing maintenance costs and improving site housekeeping.

GUARANTEED - NO LEAKAGE

- No maintenance
- Have no loss of product
- Immediately improve housekeeping and health and safety standards
- Eliminate compressed air purge costs
- Extend bearing life



Mechanical seal

V-NOTCH CONTROL OPTION

The central barrel can be made with a V notch aperture to enable fine control of product flow, for example when loading into trucks where the final weight needs to be accurately controlled. A 4-20mA actuator with feedback signal provides reliable, repeatable positioning.



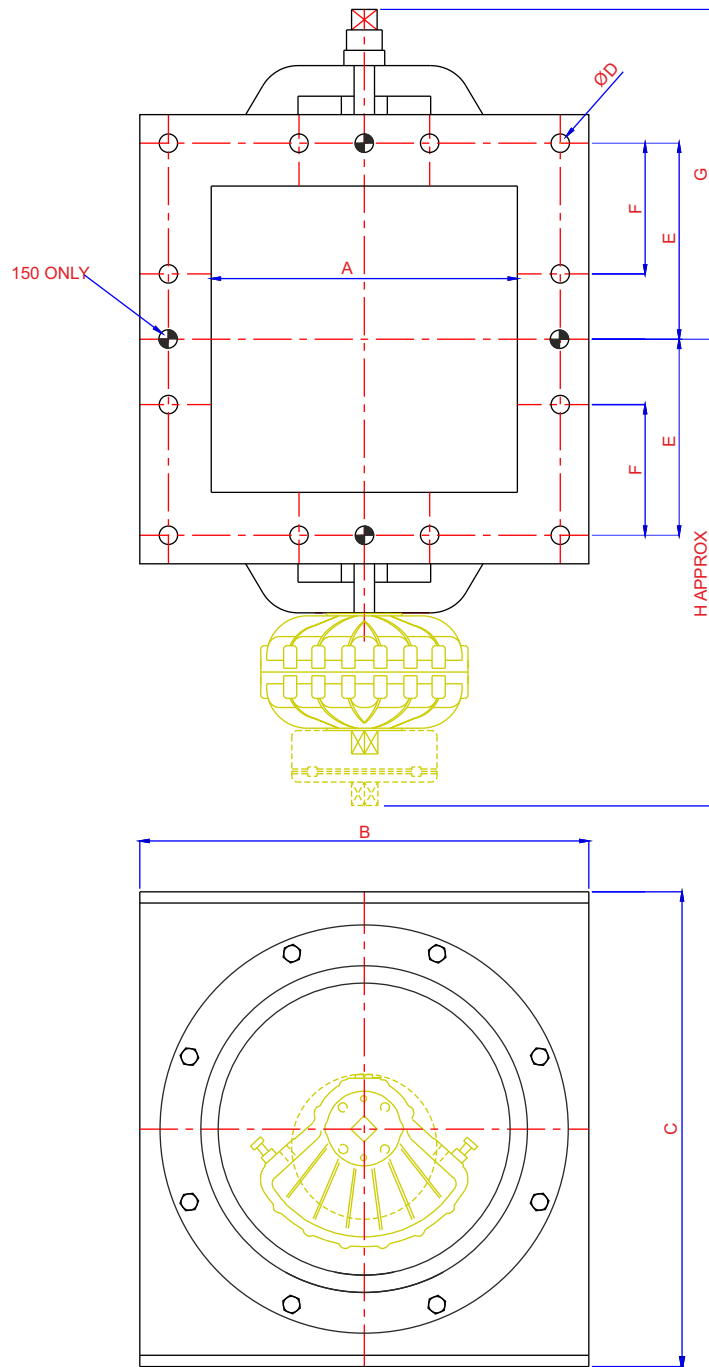
Midland Industrial Designers Limited

Common Lane, Watnall, Nottingham, England NG16 1HD
T: (+44)(0)115 9382154 E: enquiry@mid.uk.com
Manufacturers of powder handling equipment since 1959

www.mid.uk.com



Engineered to last



SIZE A	B SQ	C	D	E	F	G	H
150	280	250	M10	115	-	213	258
200	300	310	12	135	90	260	335
250	370	388	18	162	108	275	406
300	440	465	18	192	128	323	452
350	490	520	14	220	145	348	477
400	550	580	18	255	170	385	556
450	600	640	18	270	180	378	599
500	650	670	18	300	200	447	629

Larger valves designed and built to order

Midland Industrial Designers Limited