



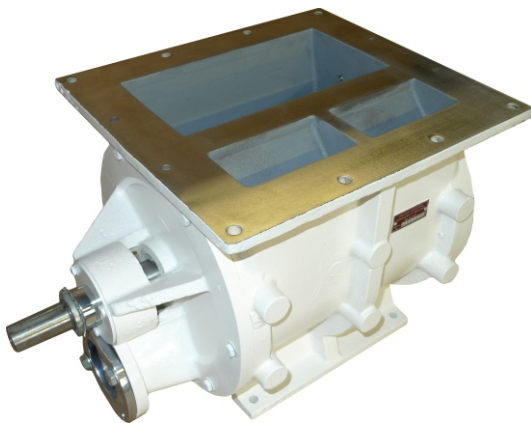
Rotary Blowing Seal RBX wear resistant

Engineered to last

ADDING WEAR RESISTANCE

The RBX range is designed to be made from wear resistant materials in the areas of the valve that commonly wear out the fastest.

Cast iron and carbon steels have a limited wear life when used with abrasive products. For a small additional cost, we can introduce 400 wear plate in the areas most susceptible to wear.



ATEX CERTIFICATION

The RBX range is certified by Basseefa for use with explosive products, both as equipment and as a protective device.

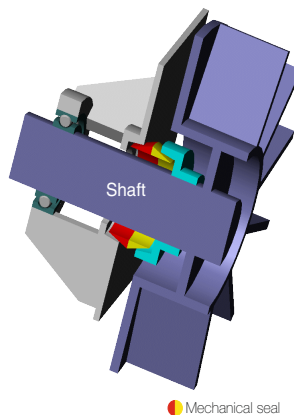
As equipment, the valves are suitable for use with an internal zone 20 atmosphere where an explosive mixture is constantly present. Where explosion isolation is required, they have been tested to 10 bar with St2 category dusts.

| | Internal | External |
|-----------|----------|----------|
| Zone 0/20 | ✓ | ✗ |
| Zone 1/21 | ✓ | ✓ |
| Zone 2/22 | ✓ | ✓ |
| APD | ✓ | ✗ |

MECHANICAL SHAFT SEALS

With traditional seals the product pushes past packings and wears the shaft - even the body behind hard facings can wear out. Used for over 25 years, MID's unique mechanical shaft seals are leak tight and maintenance free, dramatically reducing maintenance costs and improving site housekeeping.

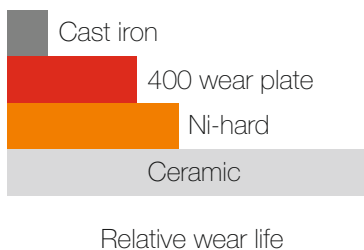
GUARANTEED - NO LEAKAGE



- No maintenance
- Have no loss of product
- Immediately improve housekeeping and health and safety standards
- Eliminate compressed air purge costs
- Extend bearing life

LIFE EXPECTANCY X 4

Adding 400 wear plate quadruples valve life, compared to a cast iron or carbon steel valve, simply by virtue of the relative hardness of the materials used.



The main body of the valve is fabricated from 400 wear, which is 4x harder than cast iron or carbon steel, the rotor comes with replaceable 400 wear plate blade tips and for economical refurbishment the end covers are also designed with 400 wear plate replaceable inserts.



Butterfly



Rotary



Slide



Knifegate



Diverter



Dyris



Ceramic



Specials



Sifter



Seals

Midland Industrial Designers Limited

Common Lane, Watnall, Nottingham, England NG16 1HD
T: (+44)(0)115 9382154 F: (+44)(0)115 9386315 E: enquiry@mid.uk.com
Manufacturers of powder handling equipment since 1959

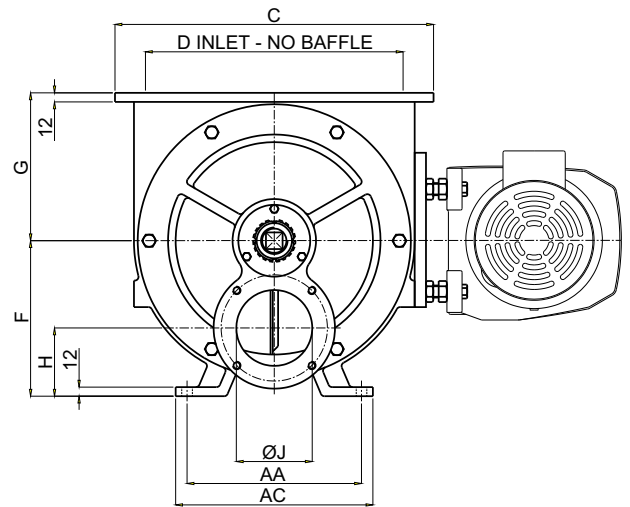
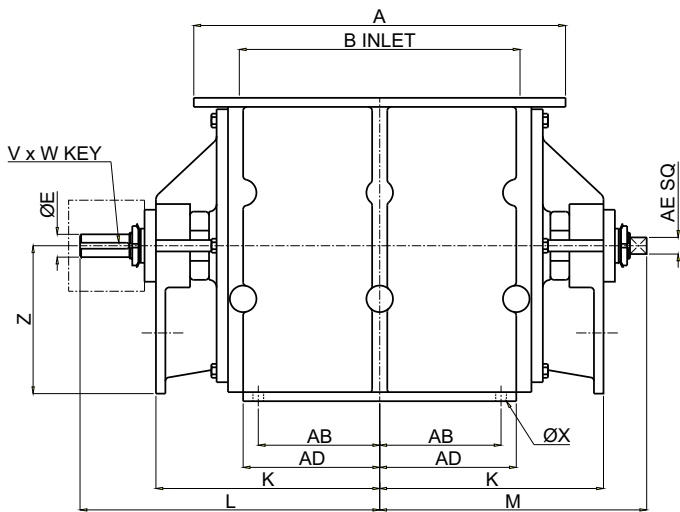
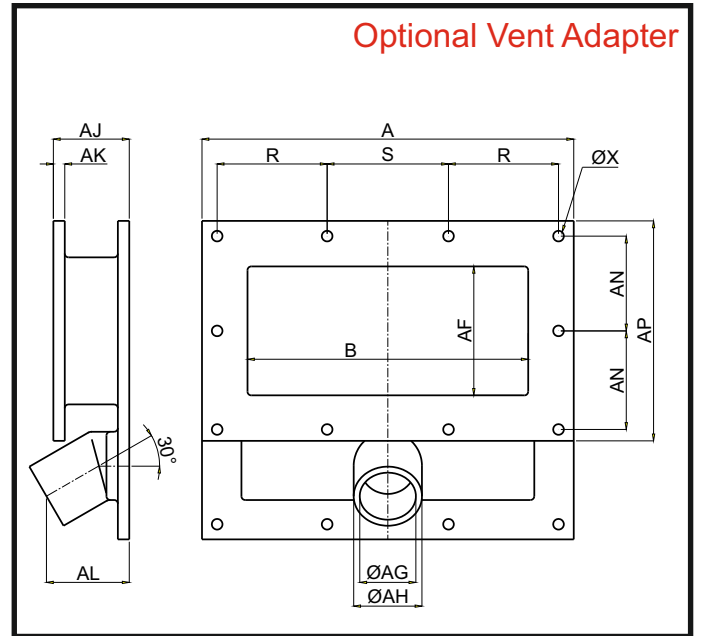
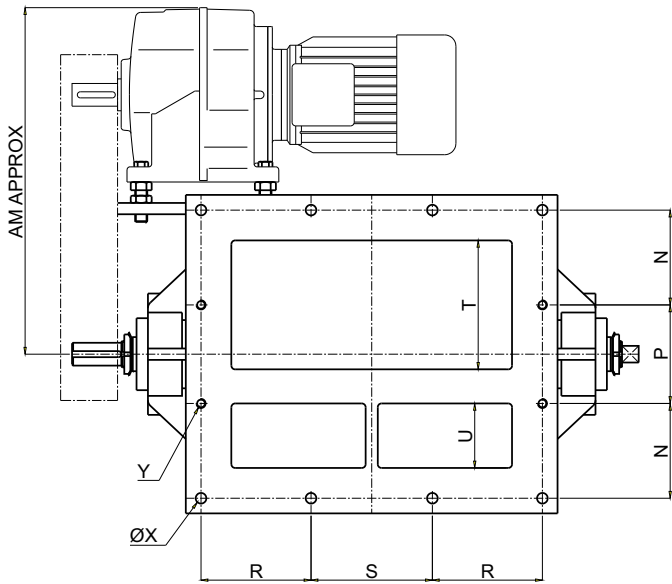
www.mid.uk.com





Rotary Blowing Seal RBX wear resistant

Engineered to last



| Size | A | B | C | D | E | F | G | H | J | K | L | M | N | P | R | S | T | U | V | W |
|------|-----|-----|-----|-----|----|-----|-----|-----|-----|-----|-----|-----|-----|-----|-----|-----|-----|-----|----|---|
| 02 | 310 | 210 | 320 | 220 | 30 | 180 | 152 | 60 | 75 | 227 | 267 | 306 | 97 | 96 | 92 | 96 | 120 | 50 | 8 | 6 |
| 04 | 390 | 280 | 360 | 250 | 30 | 180 | 170 | 80 | 75 | 250 | 285 | 345 | 110 | 110 | 120 | 120 | 140 | 70 | 8 | 6 |
| 08 | 490 | 370 | 420 | 300 | 30 | 205 | 195 | 90 | 100 | 295 | 330 | 395 | 125 | 130 | 145 | 160 | 170 | 85 | 8 | 6 |
| 12 | 500 | 380 | 470 | 350 | 40 | 245 | 225 | 105 | 125 | 305 | 340 | 420 | 145 | 140 | 150 | 160 | 200 | 100 | 12 | 8 |

| Size | X | Y | Z | AA | AB | AC | AD | AE | AF | AG | AH | AJ | AK | AL | AM | AN | AP | l/rev | ft ³ /rev |
|------|----|-----|-----|-----|-----|-----|-----|----|-----|----|-----|-----|----|-----|-----|-----|-----|-------|----------------------|
| 02 | 12 | M10 | 175 | 180 | 85 | 210 | 100 | 22 | 120 | 48 | 63 | 80 | 12 | 90 | 267 | 95 | 220 | 5.7 | 0.2 |
| 04 | 12 | M10 | 168 | 200 | 120 | 230 | 135 | 22 | 140 | 60 | 76 | 90 | 12 | 95 | 386 | 110 | 250 | 11.4 | 0.4 |
| 08 | 14 | M10 | 195 | 230 | 160 | 260 | 180 | 22 | 170 | 74 | 90 | 100 | 15 | 123 | 457 | 125 | 290 | 22.8 | 0.8 |
| 12 | 14 | M12 | 235 | 260 | 165 | 300 | 185 | 30 | 200 | 84 | 100 | 110 | 15 | 135 | 600 | 140 | 320 | 34.3 | 1.2 |

Metric/Round inlets are available. Please ask for details

Midland Industrial Designers Limited

Common Lane, Watnall, Nottingham, England NG16 1HD
 T: (+44)(0)115 9382154 F: (+44)(0)115 9386315 E: enquiry@mid.uk.com
 Manufacturers of powder handling equipment since 1959

www.mid.uk.com

